

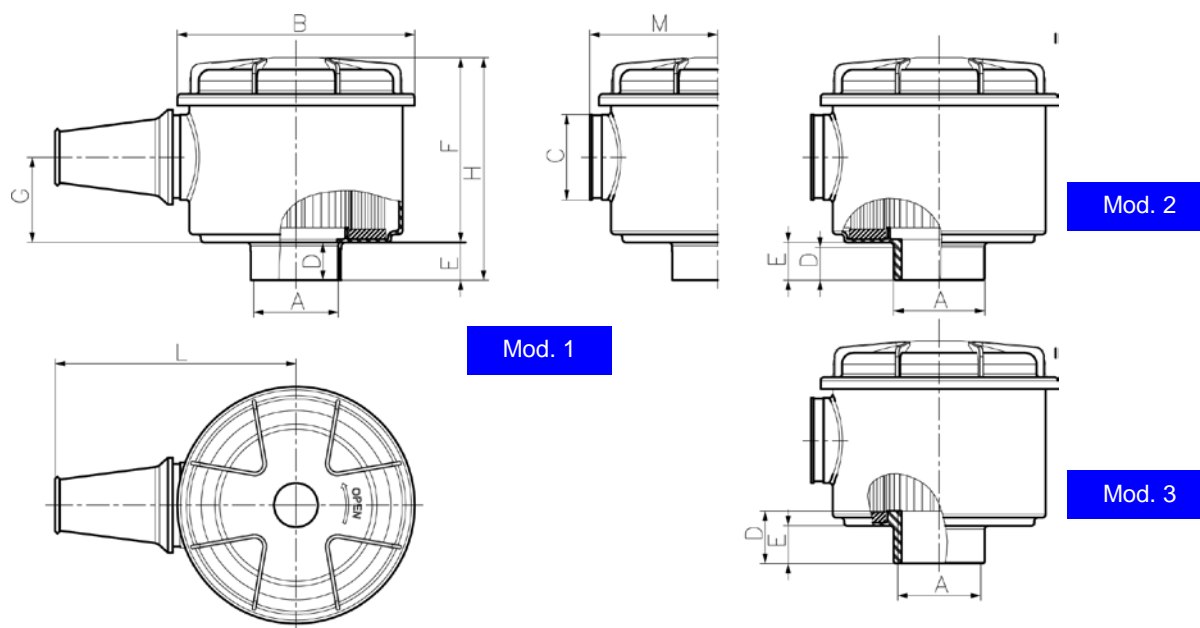
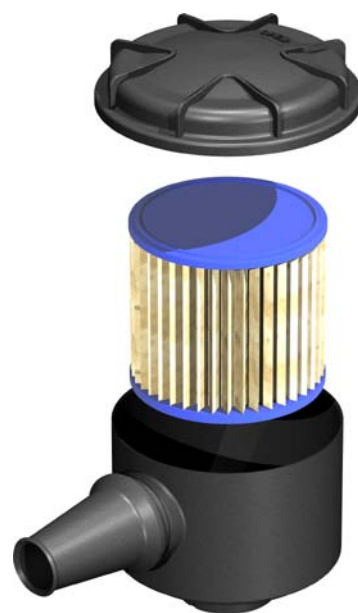
Series **AFN-AFL-FAA**

Air filter FAI FILTRI

# AFN SERIES

The new "AFN" filters series is widely applicable on: small c.c. engines, screw and piston compressors, vacuum pumps and marine engines. they introduce remarkable advantages:

1. Flexibility to the different applications
2. Silencer effect
3. Suitability for high humidity conditions
4. Metal free
5. Full recyclability
6. Easy of maintenance
7. Working temperature from -30°C up to +130°C

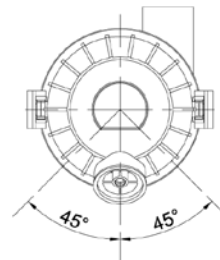
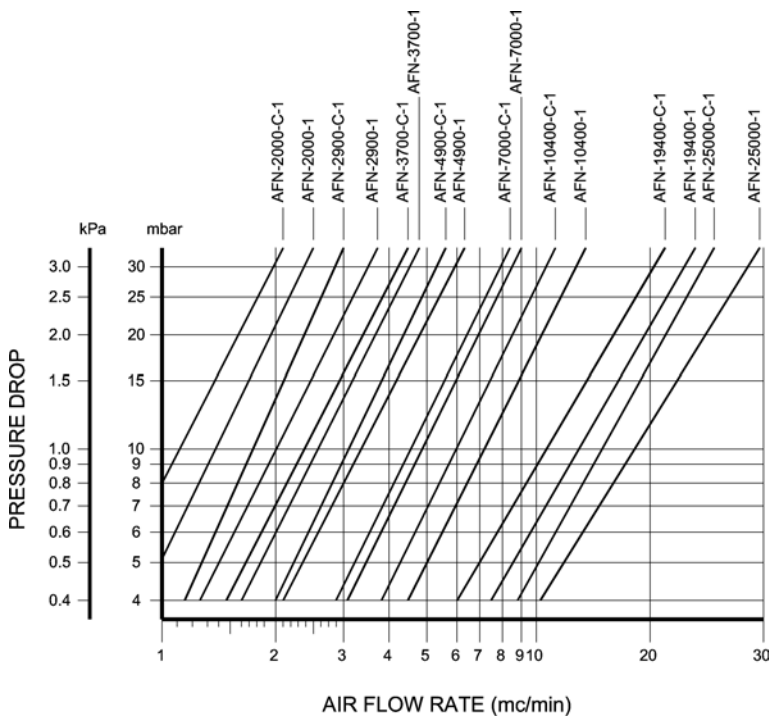
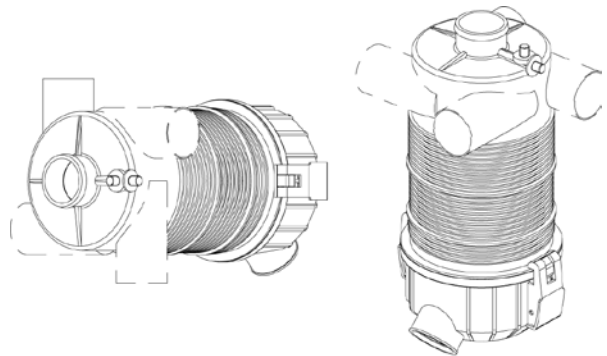


Type	Flow rate m <sup>3</sup> /min	A	B	C	D	E	F	G	H	L	M	Filter element	Mod.
AFN-1000	1	40	112	35	23	24	85	33	109	102.5	61.5	CA-2156	1
AFN-1700	1.7	40	144	52	23	23	113	52	136	129	78	CA-2157	1
AFN-2050	2.05	52	144	52	23	23	113	52	136	129	78		1

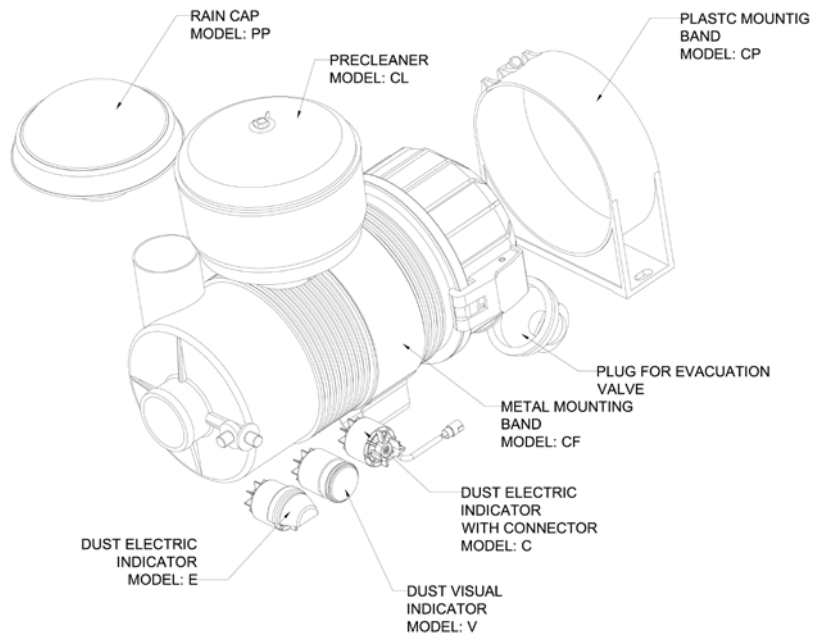
# AFN SERIES

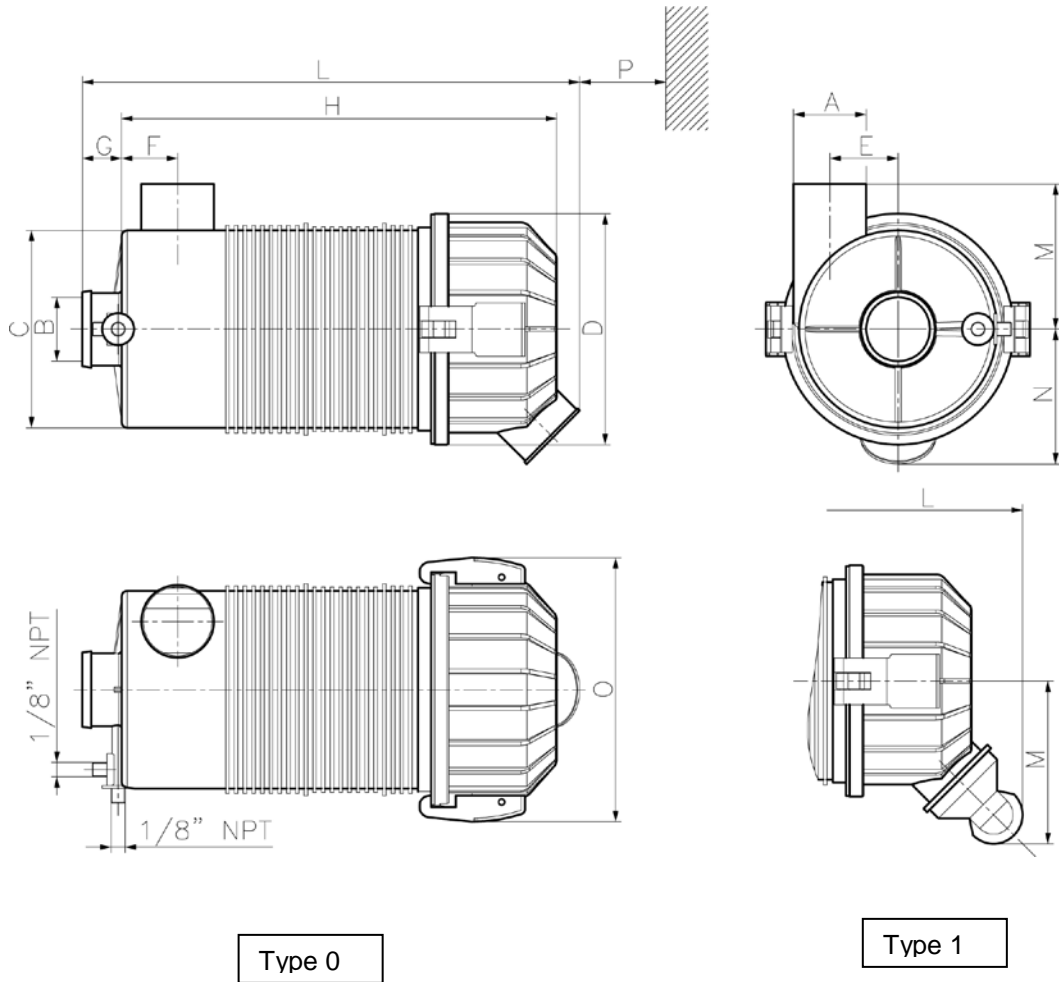
The AFN filter series is suitable for intake air of earth moving machines, tractors, compressors, lift trucks, power generator units, pumps, sweeping machines, ship engines and similar, agricultural sector, building trade, mining. They can replace metal air cleaners.

Thanks to the dust-evacuator, AFN filters can be fitted either horizontally or vertically. Besides the dust-evacuator can be inclined up to 45° max compared to the vertical.



## AFN filter components

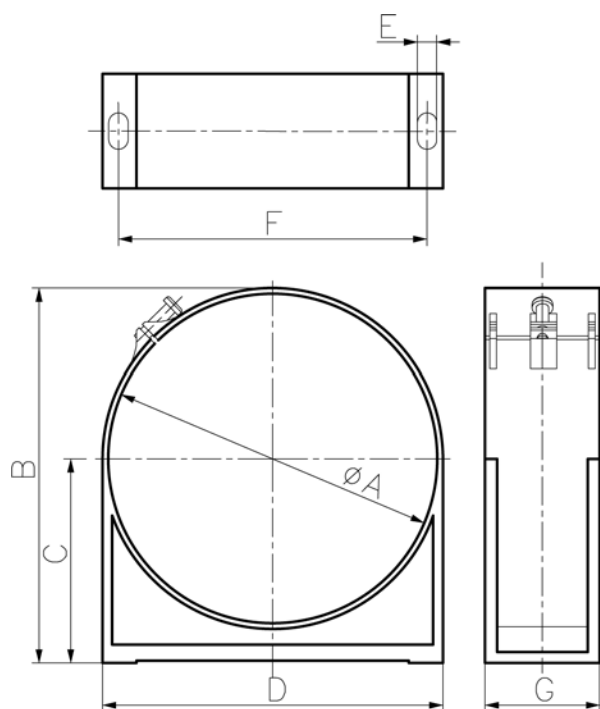




Type	Flow rate (m <sup>3</sup> /min) Main element	Flow rate (m <sup>3</sup> /min) Safety element	Replace element		A	B	C	D	E	F	G	H	L	N	M	O	P
			Main	Safety													
AFN-2000	2	1.6	CA-1689	CA-2224	50	44	122	136	38	32	25	190	228	76	83	153	140
AFN-2900	2.9	2.5	CA-1584	CA-1587	51	51	146	160	45	42	25	302	340	87	100	180	300
AFN-3700	4	3.4	CA-2151	CA-2225	63.5	63.5	175	189	51.5	44	28	317	359	114	112	207	200
AFN-4900	4.9	4.4	CA-1585	CA-1588	76	76	184	198	52	44	25	332	370	105	115	218	330
AFN-7000	7	6.7	CA-1586	CA-1589	95	89	212	226	56	53	25	357	397	119	130	247	355
AFN-10400	10.4	8.7	CA-1702	CA-1703	114	101	268	281	75	64	35	425	486	152	185	302	385
AFN-19400	20.9	16	CA-2158	CA-2226	152	127	309	322	80	83	35	500	560	173	204	344	440
AFN-25000	26.3	21.7	CA-2159	CA-2227	178	152	394	406	105	121	42	530	586	212	245	427	600

# DIMENSIONAL MOUNTING BAND

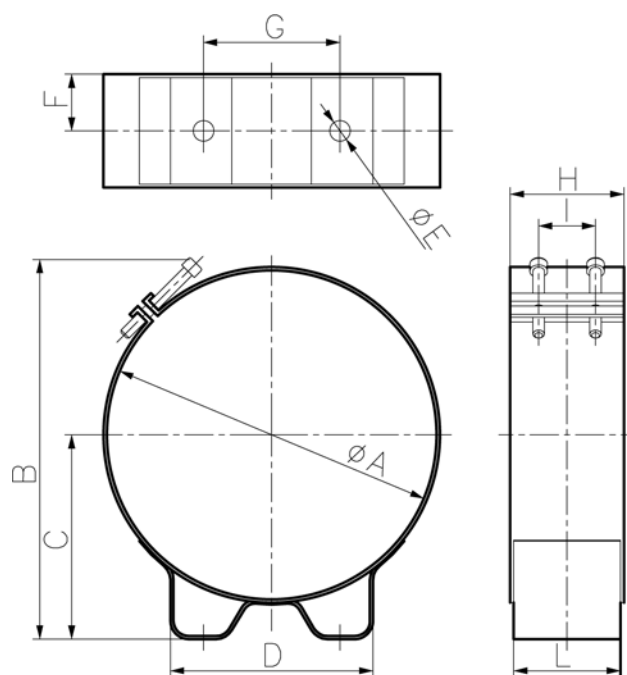
Plastic mounting band (for models AFN2000 ÷ AFN10400)



Type	A	B	C	D	E	F	G
CP-2000	121	142	76.5	140	16x8.5	116	43.5
CP-2900	145	167	90	160		136	54
CP-3700	175	196	101.5	182		153.5	
CP-4900	183	204	107.5	191		163	
CP-7000	212	233	122	220		190	
CP-10400	268	290.5	150	277	18x11	226	83.5

Metal mounting band for all models

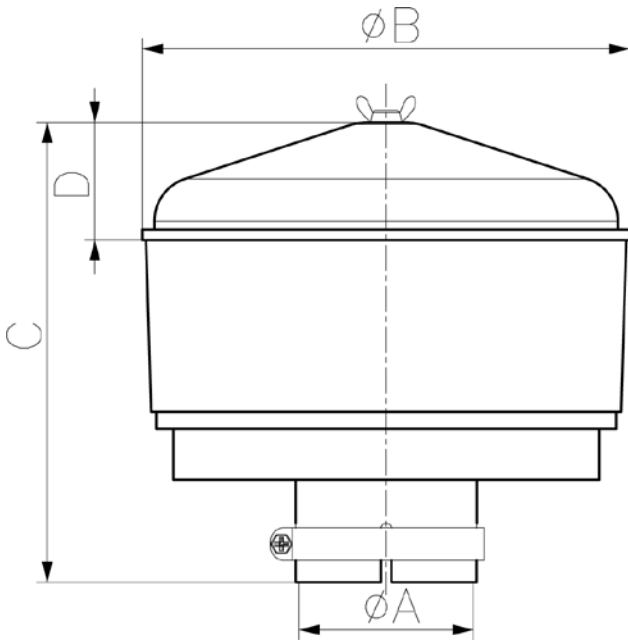
Type	CF-2000	CF-2900	CF-3700	CF-4900	CF-7000	CF-10400	CF-19400	CF-25000
A	122	146	175	184	212	268	309	394
B	160	180	201	209	232	280	331	380
C	78	90	101	106	120	148	184	203
D	100	110	177	125	140	160	185	240
E	9					11		
F	20					30	50	
G	70	80	153	95	110	127	152	203
H	40	50				80	109	
I			28			55	81	
L	40					60	100	





# DIMENSIONALS

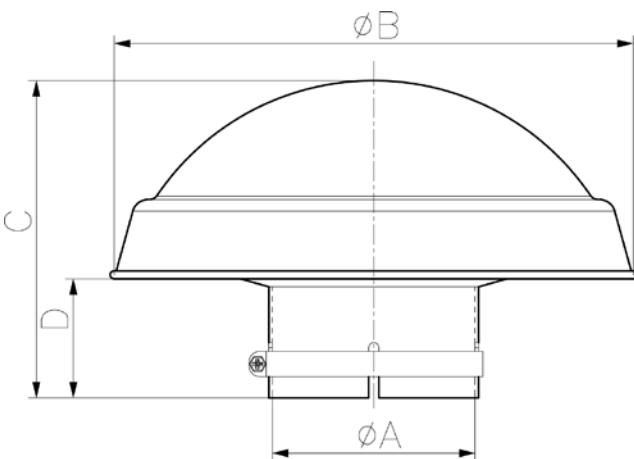
## CENTRIFUGAL PRECLEANER



Model	A	B	C	D	Flow rate (m <sup>3</sup> /min)
CL-2000	45.2				1.4÷1.7
CL-2900	51.2	143	135	28	2.1÷3.7
CL-3700	63.7				2.5÷5.1
CL-4900	76.2	173	144	45	3÷6.7
CL-7000	96.2	270	191	51	5÷10
CL-10400	114.2				6÷11.8
CL-19400	152.2	306	218	52	9÷23.7
CL-25000	178	406	270	53	11÷30

Cyclone prefilter can be used like rain cap, than though the centrifugal deflectors system achieves a first step of separation dust until 75-85% with low pressure drop, then permit to extend service intervals. Bowl service will be done when dust achieves maximum level suggested, at this point the bowl must be empty.

## RAIN CAP

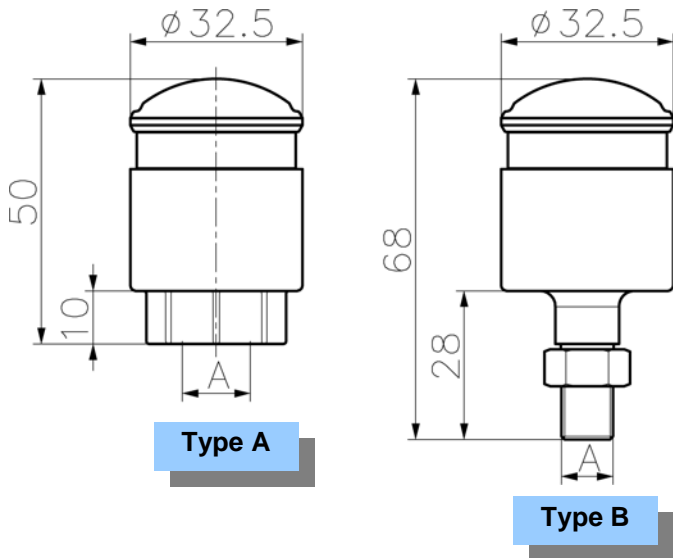


Model	A	B	C	D	
PP-2900	51.2	133	80	30	Only one model for AFN2000-2900
PP-3700	63.7	152	84		
PP-4900	76.2	160	87	32	
PP-7000	96.2	252	111	45	
PP-10400	114.2	250	110	44	
PP-19400	153.2	360	145	55	
PP-25000	179.2	380	130	66	N.B. Metal model

The rain cap protect air cleaner from rain, hail, leaves, hay, tewigs extending servicing intervals. The rain cap are easy mounted on the filter, they don't increase pressure drop, they reduce the engine noise. Rain caps are available in plastic or in metal materials.

# DIMENSIONALS DUST LOAD INDICATORS

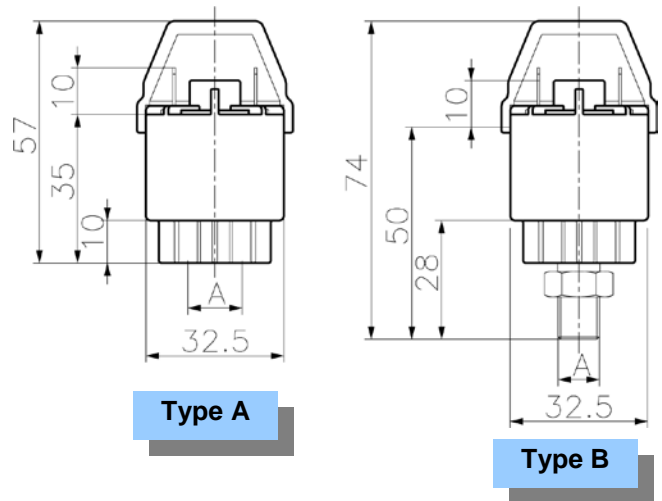
Visual dust load indicator



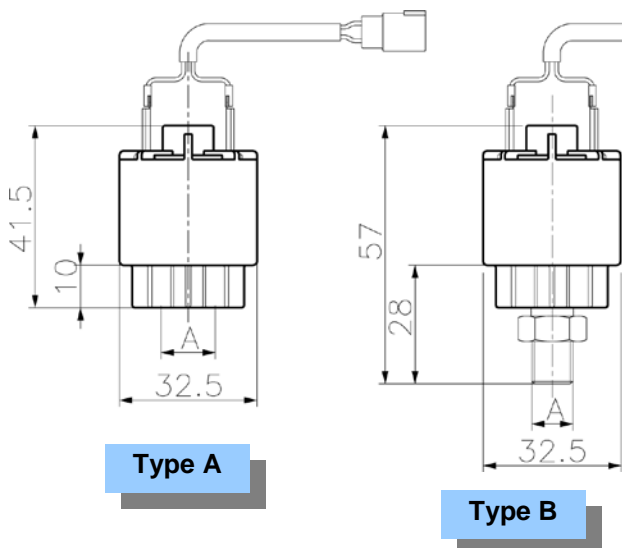
Model	Setting		A	Type
	(mbar)	kPa		
V1	25	2.5	1/8" NPT	A
V2	35	3.5		
V3	50	5		
V4	62	6.2		
V10	25	2.5	1/8" NPT	B
V11	35	3.5		
V12	50	5		
V13	62	6.2		

Electric dust load indicator

Model	Setting		A	Type
	(mbar)	kPa		
E1	50	5	1/8" NPT	A
E2	62	6.2		
E10	50	5	1/8" NPT	B
E11	62	6.2		

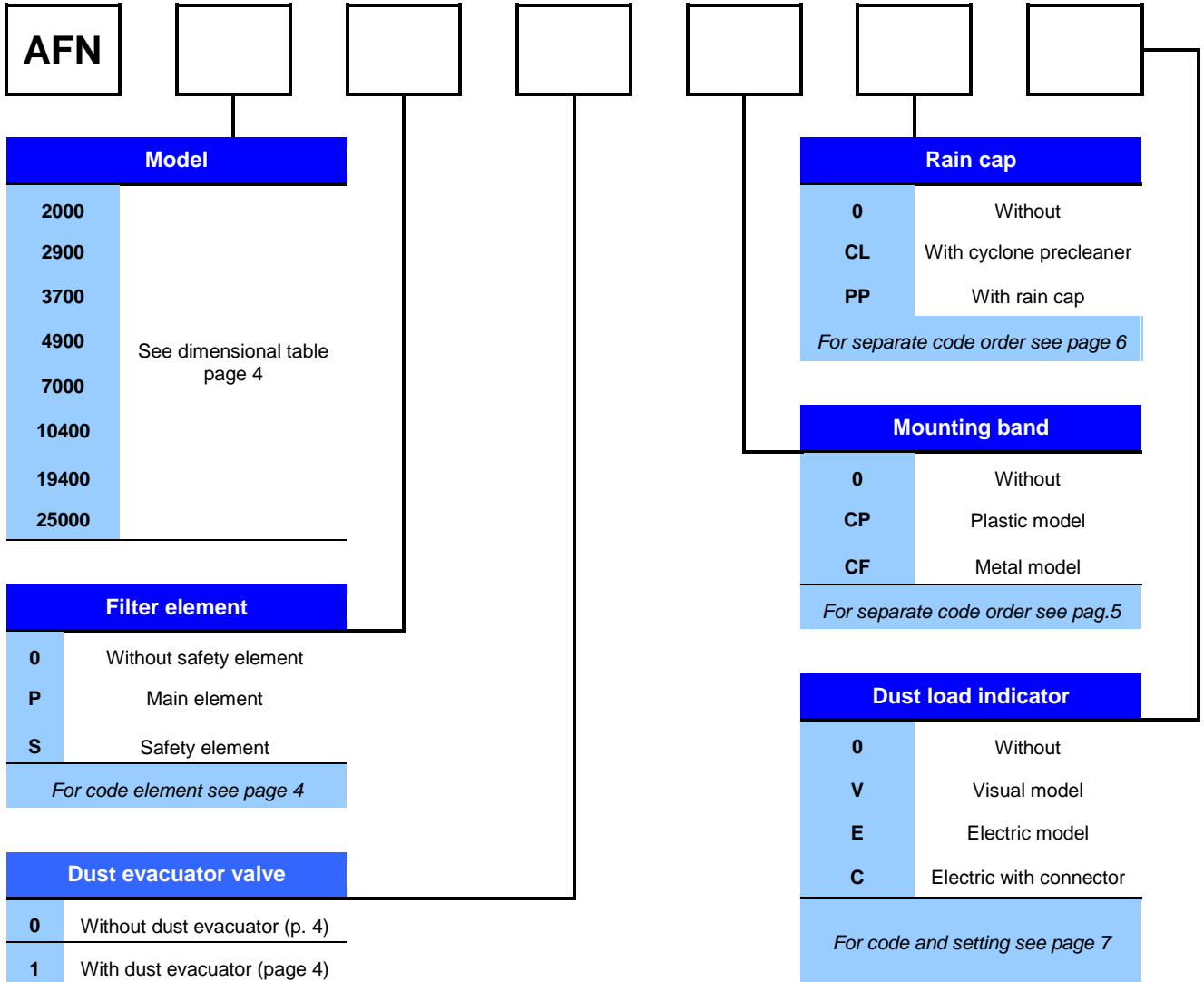


Electric dust load indicator with connector



Model	Setting		A	Type
	(mbar)	kPa		
C1	50	5	1/8" NPT	A
C2	62	6.2		
C10	50	5	1/8" NPT	B
C11	62	6.2		

# ORDER CODE



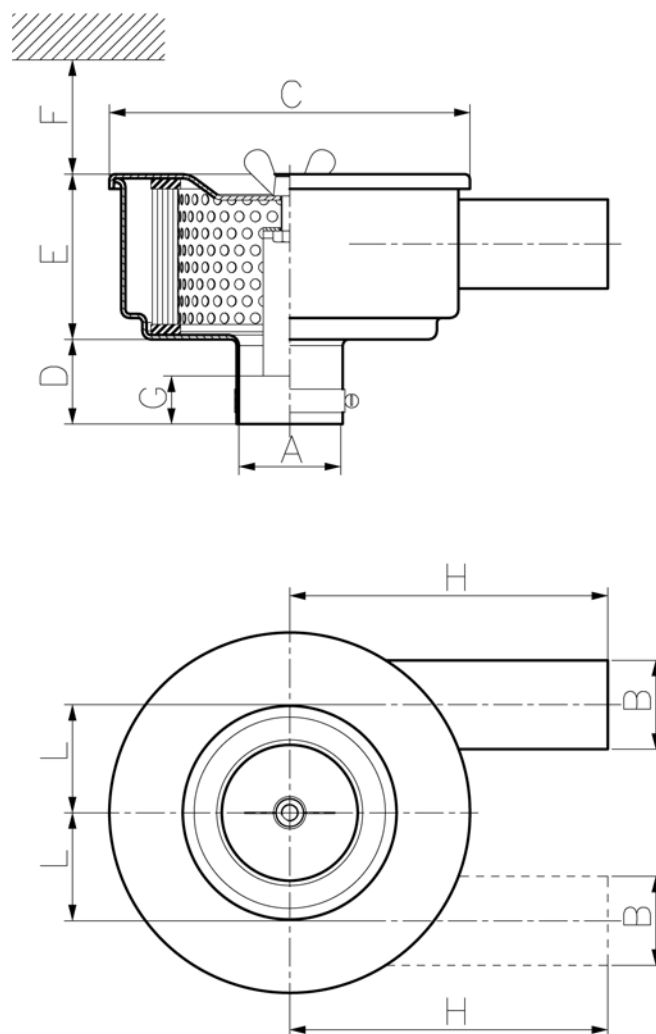


# AFL SERIES

Filtering degree: 5 $\mu$

Filter element in cellulose fibers

Metal parts painted with epoxy paint



Type	Flow rate m <sup>3</sup> /min	Element	A	B	C	D	E	F	G	H	L	Type	Pos. tube
<b>AFL 2500</b>	<b>2.5</b>	CA-1653	48.3	36	169	39	66.3	85	24	220	56	A	DX
<b>AFL 3000</b>	<b>3</b>	CA-2184	48.3	36	169	39	88.5	110	22	220	56	A	DX
<b>AFL 3500</b>	<b>3.5</b>	CA-2185	50.2	36	240	27	57	80	-	195	97.5	A	SX
<b>AFL 3800</b>	<b>3.8</b>	CA-2185	60	36	240	47	57	80	20	195	97.5	A	SX
<b>AFL 5000</b>	<b>5</b>	CA-1840	60	57	240	54	88	110	25	255	87	A	DX

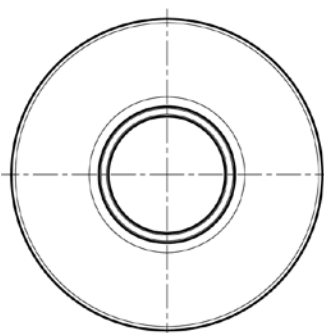
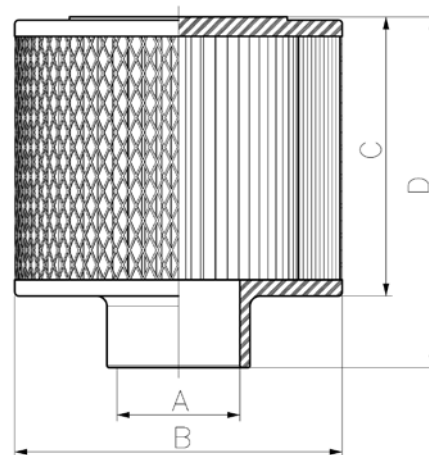
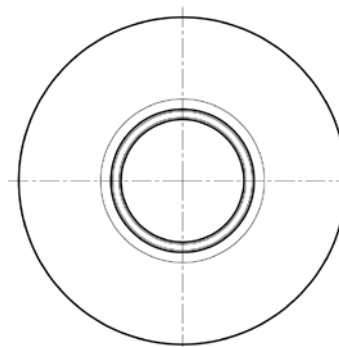
# AIR FILTER ELEMENT FOR COMPRESSORS

With tang and end-cap in polyurethane

Filtering degree: 5 $\mu$

Filter element in cellulose fibers

Code	Flow rate (m <sup>3</sup> /min)	A	B	C	D
CA-2186	3	40	112	103	128
CA-1573	4	50	112	95	120
CA-1837	7	60	160	135	170
CA-1640	8	76	130	125	150
CA-1711	9.6	76	160	135	165
CA-1738	13.5	100	230	120	155
CA-1839	16	100	175	250	300

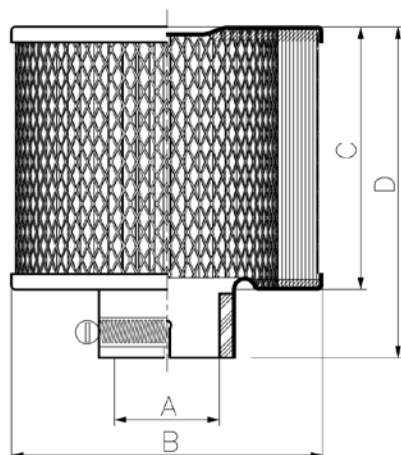


With tang and metal end-cap AFF series

Filtering degree: 5 $\mu$

Filter element in cellulose fibers

Code	Flow rate m <sup>3</sup> /min	A	B	C	D
AFF-1800 *	1.8	40	100	104	132
AFF-3500 *	3.5	52	100	104	132
AFF-5000	5	52	140	80	100
AFF-6500 *	6.5	60	150	125	150
AFF-7500	7.5	60	200	150	180
AFF-8000	8	76	200	150	180
AFF-9800 *	9.8	80	200	150	180
AFF-16000 *	16	100	255	160	200



\* Complet with antivibration seals

# FAA SERIES

## AIR FILTER FOR HIGH FLOW RATE

### TECHNICAL DATA:

#### Housing:

Carbon steel painted with blue epoxy paint

#### Working temperature:

-20°C ÷ +110°C

#### Filter element:

P05 – Cellulose fibers with filtrating degree 5 $\mu$

F05 – Polyester fibers with filtrating degree 5 $\mu$

#### Element gaskets:

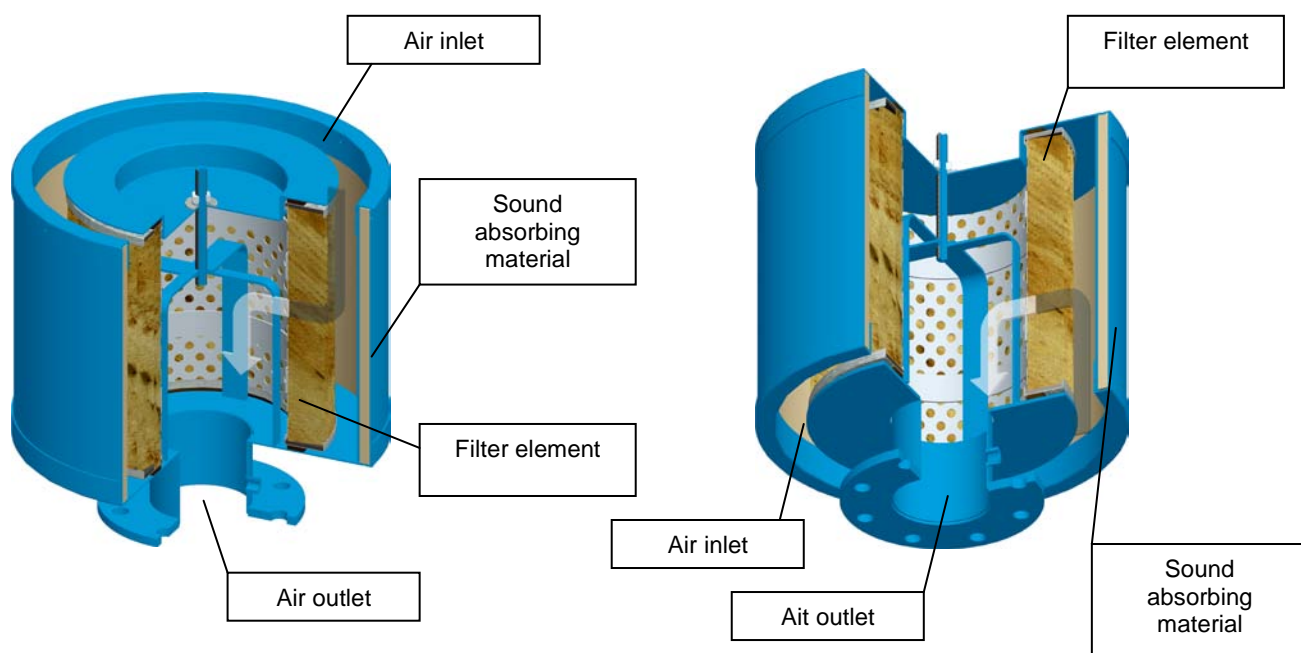
Buna-n

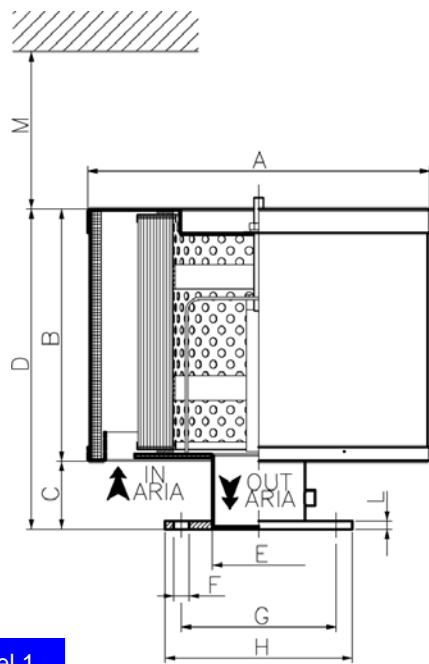
#### Pressure drop at clean filter:

$\leq 20$  mbar

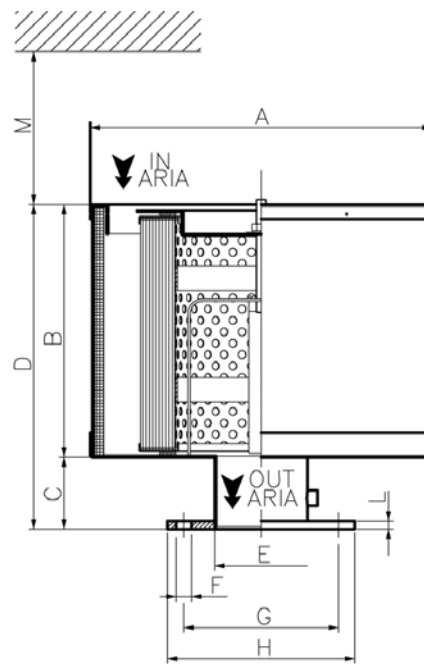
#### Flow rate:

See dimensional table

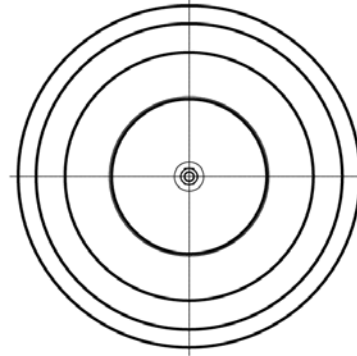
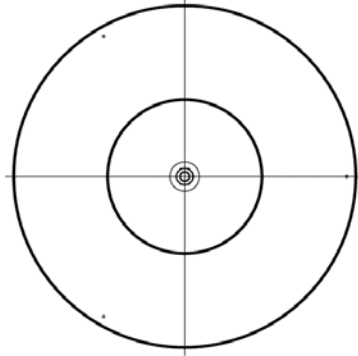




Model 1



Model 2



Type	A	B	C	D	F	G	H	L	M	Model	Flow rate (m <sup>3</sup> /min)	Element
FAA-100-1	420	310	90	400	N°8 ø19	190	230	10	350	1	<b>23</b>	003.4.0071
FAA-100-2	420	310	90	400	N°8 ø19	190	230	10	350	2	<b>23</b>	003.4.0071
FAA-125-1	420	310	68	378	N°4 ø22	216	254	10	350	1	<b>34</b>	003.4.0071
FAA-125-2	420	310	68	378	N°4 ø22	216	254	10	350	2	<b>34</b>	003.4.0071
FAA-150-1	570	309	81	390	N°4 ø22	241.3	282	10	320	1	<b>38</b>	003.4.0072
FAA-150-2	570	309	81	390	N°4 ø22	241.3	282	10	320	2	<b>38</b>	003.4.0072
FAA-200-1	523	655	76	731	N°4 ø22	298.4	343	10	675	1	<b>80</b>	003.4.0033
FAA-200-2	523	655	76	731	N°4 ø22	298.4	343	10	675	2	<b>80</b>	003.4.0033

# SAF SERIES

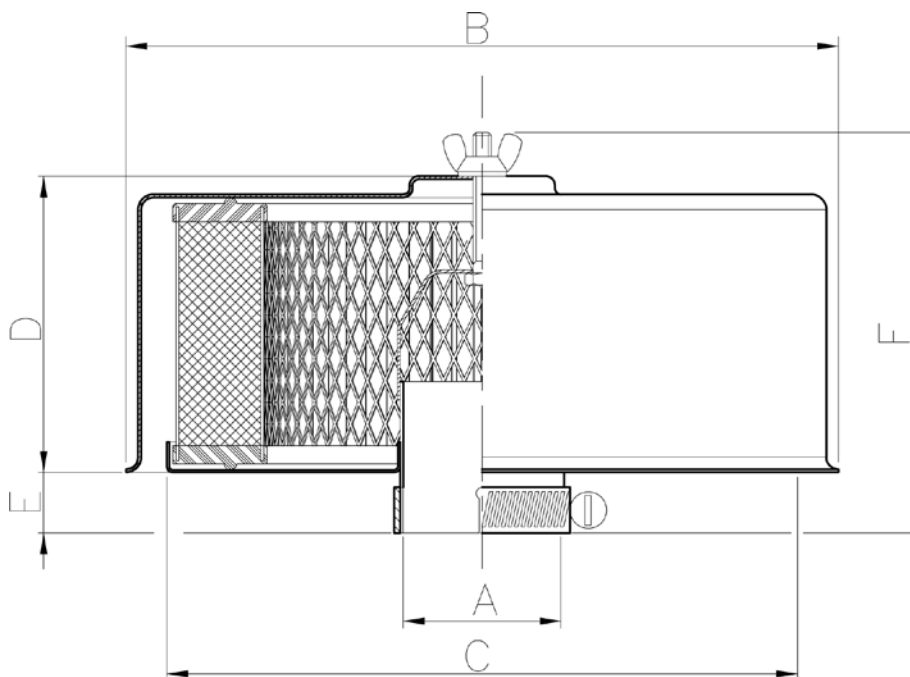
Wide range of air filter with clamp connection for mounting on coupling  
(Ideal for vacuum pumps application)

## Materials

Bell in painted metal  
Metal parts zinc plated  
End-cap in polyurethane

## Filter element

Cellulose fibers with filtrating degree 10 $\mu$



Type	A	B	C	D	E	F	Flow rate (m <sup>3</sup> /min)	Element
SAF-0400	21	75	60	51	25	91	0,4	CA-2220
SAF-0700	27	149	110	87	31	133	0,7	CA-2178
SAF-1400	33						1,4	
SAF-2300	42						2,3	
SAF-2500	48	180	150	145	28	188	2,5	CA-2179
SAF-4400	52.3	235	200	98	20	133	4,4	CA-2180
SAF-5000	60	232	180	138	44	197	5	
SAF-8000	73						8	
SAF-7700	70.3	235	200	141	20	176	7,7	
SAF-15000	89	278	225	175	17	216	15	CA-2181
SAF-30000	114	409	300	308	30	354.5	30	CA-2183

# FA SERIES

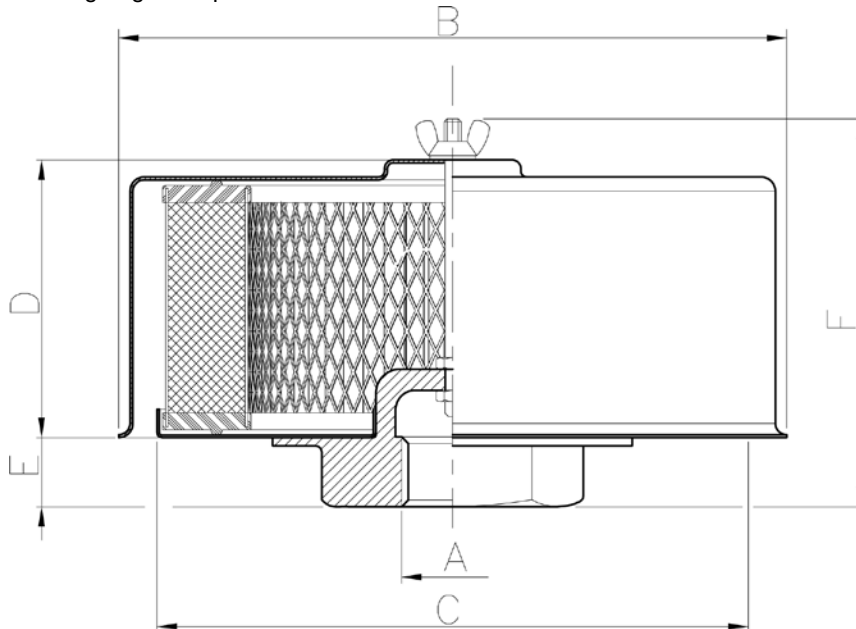
Wide range of air filter with thread connection GAS type for mounting on coupling

Materials

Bell in painted metal  
Metal parts zinc plated  
End-cap in polyurethane

Filter element

Cellulose fibers with filtrating degree 10 $\mu$



Type	A	B	C	D	E	F	Flow rate (m <sup>3</sup> /min)	Element
FA-2-038	3/8"	75	62	50	12	77	<b>0,35</b>	CA-2220
FA-2-050	1/2"							
FA-3-075	3/4"	115	86	62	24	101	<b>0,67</b>	CA-2221
FA-3-100	1"							
FA-4-075	3/4"	150	112	88	24	127	<b>1</b>	CA-2178
FA-4-100	1"							
FA-4-125	1"1/4							
FA-4-150	1"1/2							
FA-6-125	1"1/4	178	169	145	24	184	<b>1,7</b>	CA-2179
FA-6-150	1"1/2							
FA-6-200	2"							
FA-6-250	2"1/2							
FA-7-200	2"	228	168	138	30	183	<b>4,2</b>	CA-2180
FA-7-250	2"1/2							
FA-9-300	3"	275	187	175	12	211	<b>6,7</b>	CA-2181
FA-10-400	4"	409	300	308	30	354.5	<b>13,4</b>	CA-2183

# SAM SERIES

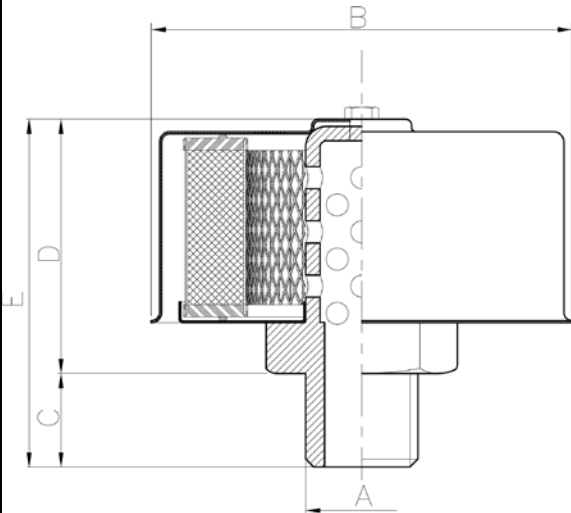
Wide range of air filter with thread connection GAS

Materials

Bell in painted metal  
Metal parts zinc plated  
End-cap in polyurethane

Filter element

Cellulose fibers with filtrating degree 10 $\mu$



Type	A	B	C	D	E	Flow rate (m <sup>3</sup> /min)	Element
SAM 5	1/4"	53	13	50	63	0.2	CA-2219
SAM 6	3/8"						
SAM 7	1/2"	75	17	63	76	0.5	CA-2220
SAM 7A	3/4"				80		
SAM 8	1"	115	20	80	100	0.8	CA-2221
SAM 10	1 1/2"	145	25	113	138	1.2	CA-2222
SAM 11	2 1/2"	185		165	190	1.5	CA-2223

# SAN SERIES

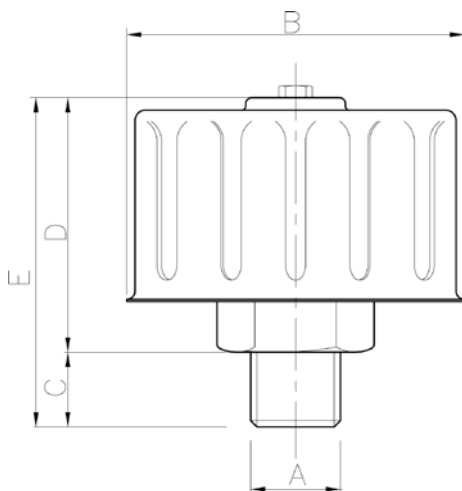
Wide range of air filter in plastic materials

Materials

Bell and thread element in plastic

Filter element

Cellulose fibers with filtrating degree 10 $\mu$



Type	A	B	C	D	E	Flow rate (m <sup>3</sup> /min)
SAN 54 1	3/8"	54	21	42.5	63.5	0.15
SAN 54 2	1/2"					
SAN 75 1	1/2"	75	29	52	81	0.2
SAN 75 2	3/4"					